

**YOUR *STEEL* SUPERMARKET**



**243 West 3300 South**  
Salt Lake City, Utah 84115

**M-F: 8:00 am – 5:00 pm**  
Closed Weekends

**SHOP ONLINE**

**[www.wasatchsteel.com](http://www.wasatchsteel.com)**



**FAX: (801) 486-0919**



**B-Decking**



**Multi-Tube**



**Structural Steel**



**Tubing**



**Pipe**



**Services**



**Plate**



**Grating / Grip Strut**



**Surplus**



**Ornamental**



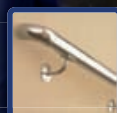
**100's Online Products**



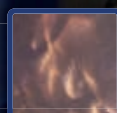
**Custom Pickets**



**Hardware**



**Stainless Railing**



**Steel Finishes**



**Gloves**





## TOP 10 REASONS to Think Local - Buy Local - Be Local

**1)** Buying local is perpetual. **2)** Increases support of community groups. **3)** Keeps our community unique and local tourism businesses benefit. **4)** Reduces environmental impact. **5)** Creates more good jobs. **6)** You receive better service. **7)** Invests in community. **8)** Puts your taxes to good use. **9)** Buy what you want, ensure innovation and low prices over the long-term. **10)** Encourages local prosperity.

Reference: <https://sustainableconnections.org/thinklocal/why>



**Fast and Friendly Service**

**Professional**

**Custom Attention**

**Knowledgeable Staff**

**We Care About Quality**





**LYNN HURST**

General Manager • Operations Manager  
lynn@wasatchsteel.com



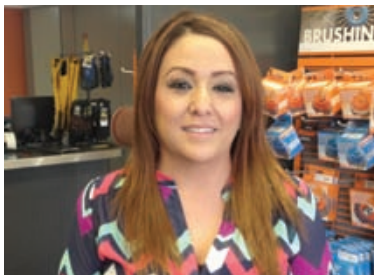
**YIMEI HU**

APAR  
yimei@wasatchsteel.com



**MARIA TAPIA**

Sales  
maria@wasatchsteel.com



**BARBARA AVELAR**

Sales  
barbara@wasatchsteel.com



**WASATCH  
STEEL**

**Committed to  
provide quality  
material with the  
best customer  
service available.**

---

Please feel free to  
contact anyone of us  
to insure you have the  
best experience on  
your purchases. Thank  
you from your friends  
at **Wasatch Steel.**



**TERESA WU**

General Manager • Administration Manager  
teresa@wasatchsteel.com



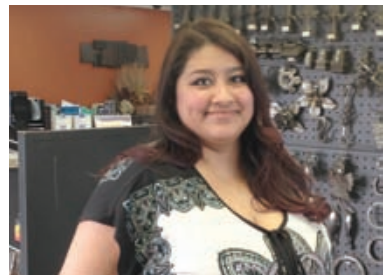
**KARAN CHILDS**

Purchasing-Sales  
karan@wasatchsteel.com



**DAVID TANNER**

Outside Sales  
david@wasatchsteel.com



**CARINA QUINTERO**

Sales  
carina@wasatchsteel.com



## OUR CREW



**We can deliver to your job site.** Weber, Davis, Utah, Cache, Summit, Tooele, Wasatch, Duchesne, Sanpete, and Sevier counties. Also southern Idaho and Wyoming. Our trained sales people can give you all the details. We can usually deliver next day.



Matt Danielson is our Warehouse Manager. You can contact him or any one of our guys for a prompt response to any questions or concerns you may have.

**PLEASE  
CALL FOR CURRENT  
PRICING**



**Our crew is trained and experienced** to process your order to your specifications. We can:

- Shear
- Line Burn
- Saw Cut
- Punch Holes
- Bend



We are members and supporters of Local First.  
([www.localfirst.org](http://www.localfirst.org))

**WASATCH STEEL** 243 West 3300 South • SLC, UT 84115 • (801) 486-4463 • FAX: (801) 486-0919

**SHOP ONLINE**  *Welding Supplies*



# B-DECKING



**PLEASE  
CALL FOR CURRENT  
PRICING**

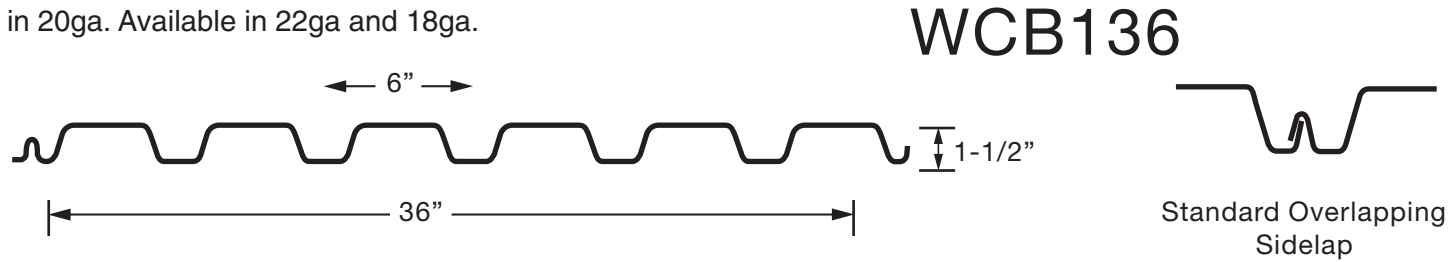
## Now Available!

- 18 GA GALV X 12'
- 20 GA GALV X 6', 8', 10', 12', 20', 24'
- 22 GA GALV X 24'
- ALL SIZES AVAILABLE NOW!

**Call or email Sales to order.**

## SPECIFICATIONS:

**WCBN36™ and WCB136™** is a steel roof deck panel. Can be used for roofs, mezzanines, canopies and shelving. Standard in 20ga. Available in 22ga and 18ga.



### Lengths:

- Minimum Factory Cut: 4' 00"

### Width:

- 36" Panel Coverage

### Finishes:

- Galvanized G60
- Galvanized G90

### Tolerances

- Length  $\pm 1/8"$

### Note

- Meets all SDI specifications.

### Wasatch Steel is Utah's Steel Supermarket

offering excellent professional steel services and a complete line of new prime steel, surplus, secondary material, railing systems, ornamental iron, metal finishing products, tools and equipment.







## MULTI-TUBE

### Measurements

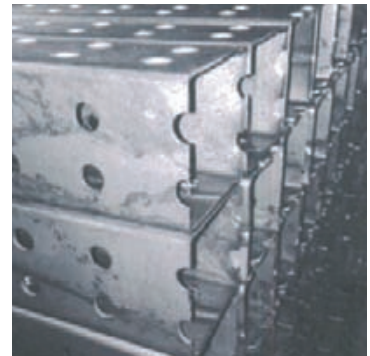
- 3" Square X .105 X 24'
- Hot Roll/High-Strength
- Double Punched (2 Inch Increments)
- 9/16 Inches Hole Punched Diameter
- 42 Pieces per Bundle
- Grade 55
- 55,000 Minimum Yield

### Material

- Durable
- Raw
- Structural
- Uncoated

### Description

- Extremely versatile, multi-tube can be used to create just about anything for any environment
- Punched holes for connecting in any configuration
- Limitless possibilities for just about any industry
- ISO 9001:2008



Multi-tube is a raw, structural steel (uncoated) tube with punched holes for connecting: used to build structures for different industries.

## CHANNEL AND ANGLE IRON



**We can support you on your jobs from start to finish.** Made in Utah, most of our channel and angle iron is A36 mild steel. With your drawing we are able to punch holes exactly where you need them. We can also cut the material to your precise specification and deliver to your location.

### Structural Steel



We have pre-punched channel 1 1/4" X 1/2" x 1/8" x 20' in stock.

**We carry a variety of new and surplus beams.** 20' and 40' lengths that can be cut to your precise measurements.



# ANGLES, CHANNELS, AND BEAMS



**PLEASE  
CALL FOR CURRENT  
PRICING**

## EQUAL ANGLES • LBS PER FT.

1/2" X 1/2" X 1/8" • .38#	1 1/2" X 1 1/2" X 1/8" • 1.23#	2 1/2" X 2 1/2" X 1/4" • 4.10#
3/4" X 3/4" X 1/8" • .59#	1 1/2" X 1 1/2" X 3/16" • 1.80#	3" X 3" X 3/16" • 3.71#
1" X 1" X 1/8" • .80#	1 1/2" X 1 1/2" X 1/4" • 2.34#	3" X 3" X 1/4" • 4.90#
1" X 1" X 3/16" • 1.16#	2" X 2" X 1/8" • 1.65#	3" X 3" X 3/8" • 7.2#
1" X 1" X 1/4" • 1.49#	2" X 2" X 3/16" • 2.44#	3 1/2" X 3 1/2" X 1/4" • 5.80#
1 1/4" X 1 1/4" X 1/8" • 1.01#	2" X 2" X 1/4" • 3.19#	4" X 4" X 1/4" • 6.60#
1 1/4" X 1 1/4" X 3/16" • 1.48#	2" X 2" X 3/8" • 4.7#	4" X 4" X 3/8" • 9.8#
1 1/4" X 1 1/4" X 1/4" • 1.92#	2 1/2" X 2 1/2" X 3/16" • 3.07#	6" X 6" X 3/8" • 14.90#

## UNEQUAL ANGLES • LBS PER FT.

2" X 1 1/2" X 1/8" • 1.44#	4" X 3" X 1/4" • 5.80#
3" X 2" X 3/16" • 3.07#	5" X 3 1/2" X 1/4" • 7.00#
3" X 2" X 1/4" • 4.10#	6" X 4" X 5/16" • 10.45#



**PLEASE  
CALL FOR CURRENT  
PRICING**

## CHANNEL • LBS PER FT

1" X 1 1/2" X 1/8" . . . . .84#	2" X 1" X 3/16" . . . . .2.32#	6" X 8.2# (1 7/8" X 3/16")
1 1/4" X 1 1/2" X 1/8" . . .1.01#	3" X 3.5# (1 3/8" X 1/8")	8" X 11.5# (2 1/4" X 1/4")
1 1/2" X 1 1/2" X 1/8" . . .1.12#	3" X 4.1# (1 3/8" X 3/16")	10" X 15.3# (2 5/8" X 1/4")
1 1/2" X 3/4" X 1/8" . . .1.17#	4" X 5.4# (1 5/8" X 3/16")	
2" X 1" X 1/8" . . . . .1.59#	5" X 6.7# (1 7/8" X 3/16")	

## PRE-PUNCHED CHANNEL

1 1/4" X 1 1/2" X 1/8" X 20' to receive 1/2" Sq. 4" o/c



## BEAMS • LBS PER FT

4" X 7.7# . . . STANDARD	8" X 10# . . WIDE FLANGE	8" X 40# . . WIDE FLANGE
4" X 13# . . WIDE FLANGE	8" X 15# . . WIDE FLANGE	10" X 15# WIDE FLANGE
6" X 9# . . . WIDE FLANGE	8" X 18.4# . . STANDARD	10" X 19# WIDE FLANGE
6" X 12# . . WIDE FLANGE	8" X 21# . . WIDE FLANGE	10" X 22# WIDE FLANGE
6 X 12.5# . . . STANDARD	8" X 24# . WIDE FLANGE	10" X 26# WIDE FLANGE
6" X 15# . . WIDE FLANGE	8" X 28# . . WIDE FLANGE	12" X 26# WIDE FLANGE
6" X 20# . . WIDE FLANGE	8" X 31# . . WIDE FLANGE	

# FLAT BAR

## 1/8" FLAT BAR • LBS PER FT.

1/8" X 3/4" • .319#	1/8" X 1 1/2" • .638#	1/8" X 3" • 1.270#	1/8" X 6" • 2.550#
1/8" X 1" • .425#	1/8" X 2" • .850#	1/8" X 4" • 1.700#	
1/8" X 1 1/4" • .531#	1/8" X 2 1/2" • 1.063#	1/8" X 5" • 2.15#	

## 3/16" FLAT BAR • LBS PER FT.

3/16" X 1/2" • .319#	3/16" X 1 1/4" • .797#	3/16" X 2 1/2" • 1.590#	3/16" X 5" • 3.188#
3/16" X 3/4" • .478#	3/16" X 1 1/2" • .956#	3/16" X 3" • 1.913#	3/16" X 6" • 3.825#
3/16" X 1" • .850#	3/16" X 2" • 1.275#	3/16" X 4" • 2.550#	3/16" X 8" • 5.120#

## 1/4" FLAT BAR • LBS PER FT.

1/4" X 1/2" • .425#	1/4" X 1 1/2" • 1.275#	1/4" X 4" • 3.400#	1/4" X 10" • 8.500#
1/4" X 3/4" • .638#	1/4" X 2" • 1.700#	1/4" X 5" • 4.250#	1/4" X 12" • 10.20#
1/4" X 1" • .850#	1/4" X 2 1/2" • 2.125#	1/4" X 6" • 5.100#	
1/4" X 1 1/4" • 1.063#	1/4" X 3" • 2.550#	1/4" X 8" • 6.800#	

## 3/8" FLAT BAR • LBS PER FT.

3/8" X 1" • 1.275#	3/8" X 3" • 3.825#	3/8" X 8" • 10.200#
3/8" X 1 1/2" • 1.913#	3/8" X 4" • 5.100#	3/8" X 10" • 12.750#
3/8" X 2" • 2.550#	3/8" X 6" • 7.650#	3/8" X 12" • 15.300#

## 1/2" FLAT BAR • LBS PER FT.

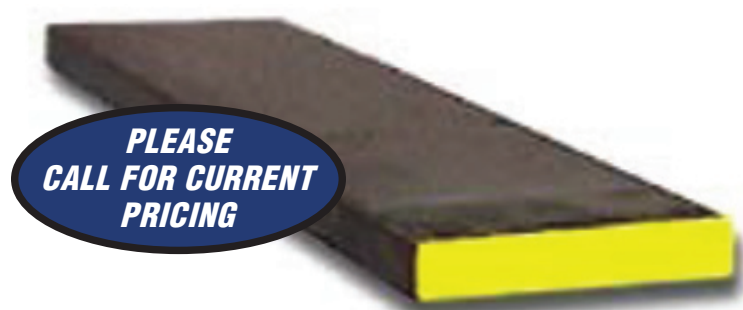
1/2" X 3/4" • 1.275#	1/2" X 2" • 3.400#	1/2" X 4" • 6.80#	1/2" X 10" • 17.00#
1/2" X 1" • 1.700#	1/2" X 2 1/2" • 4.25#	1/2" X 6" • 10.2#	1/2" X 12" • 20.40#
1/2" X 1 1/2" • 2.550#	1/2" X 3" • 5.10#	1/2" X 8" • 13.60#	

## 3/4" FLAT BAR • LBS PER FT.

3/4" X 3" • 7.65#	3/4" X 12" • 30.60#
-------------------	---------------------

## 1" FLAT BAR • LBS PER FT.

1" X 12" • 40.80#
-------------------



## SQUARE AND RECTANGULAR TUBING

Made in American mills on the west coast. We supply new prime, with mill certifications as well as surplus. We will cut to your precise measurements. We deliver to 12 different counties.

**Let our sales people know what, when, and where – we will have it ready for you.**



**PLEASE  
CALL FOR CURRENT  
PRICING**

*If you don't see what you need, give us a call and we will get it for you!*

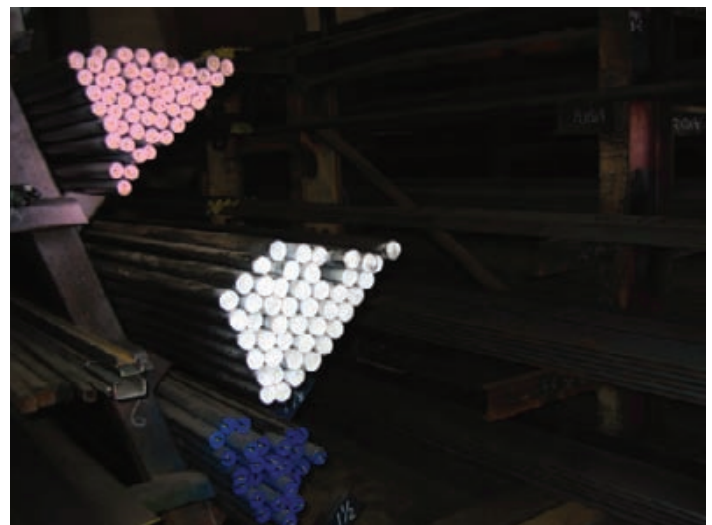




# PIPE



**We can cut pipe to your specification.**  
**We carry new and surplus pipe.** We offer pre-cut bollards from 2" inside dia. to 6" inside dia. Cut 6' up to 10' lengths. Call our sales personnel for current pricing.



**We can cut and bend your round and square bar to your precise measurements.**





**PLEASE  
CALL FOR CURRENT  
PRICING**

**ASK US ABOUT  
OUR SQUARE  
AND RECTANGLE  
TUBING IN 24'  
LENGTHS**



## SQUARE TUBING - WALL THICKNESS • LBS PER FT.

1/2" X 16 GA/.060 • .362#	1 1/2" X 14 GA/.083 • 1.589#	2.53" X 1/4" HITCH • 7.11#
5/8" X 16GA/.060 • .442#	1 1/2" X 11 GA/.120 • 2.249#	3" X 11 GA/.120 • 4.57#
3/4" X 16GA/.060 • .552#	1 1/2" X .180 • 3.35#	3" X 3/16"/.180 • 6.87#
3/4" X 14GA/.083 • .693#	2" X 16 GA/.060 • 1.564#	3" X 1/4 "/.250 • 8.81#
1" X 16 GA/.060 • .763#	2" X 13GA/.090 • 2.136#	4" X 11GA/.120 • 6.21#
1" X 14 GA/.083 • 1.034#	2" X 11GA/.120 • 2.98#	4" X 3/16"/.180 • 9.42#
1" X 11 GA/.120 • 1.443#	2" X 3/16"/.180 • 4.32#	4" X 1/4"/.250 • 12.21#
1 1/4" X 16 GA/.060 • .981#	2" X 1/4"/.250 • 5.41#	6" X 1/4"/.250 • 19.08#
1 1/4" X 14 GA/.083 • 1.337#	2 1/2" X 11GA/.120 • 3.76#	
1 1/4" X 11 GA/.120 • 1.849#	2 1/2" X 3/16"/.180 • 5.59#	3 X .105 Double Punched • 3.99#
1 1/2" X 16 GA/.060 • 1.163#	2 1/2" X 1/4"/.250 • 7.11#	

## RECTANGULAR TUBING - WALL THICKNESS • LBS PER FT.

1/2" X 1 1/2" X 16GA/.060 • .763#	1 1/2" X 3" X 11 GA/.120 • 3.530#
3/4" X 1 1/2" X 16GA/.060 • .879#	2" X 3" X 11 GA/.120 • 3.76#
1" X 2" X 14 GA/.083 • 1.589#	2" X 3" X 3/16"/.180 • 5.59#
1" X 2" X 11 GA/.120 • 2.249#	2" X 4" X 11 GA/.120 • 4.57#
1" X 3" X 16GA/.060 • 1.564#	2" X 4" X 3/16"/.180 • 6.87#
1 1/2" X 3" X 16 GA/.060 • 1.804#	6" X 2" X 11 GA/.120 • 6.21#

## HAMMERED SQ TUBE

1/2" .060 X 20'	3/4" .083 X 20'	1" .083 X 20'	1 1/2" .083 X 20'	2" .120 X 20'
-----------------	-----------------	---------------	-------------------	---------------

## HAMMERED REC. TUBE

2 X 1 X .083 X 20'	2 X 1 1/2 X .083 X 20'
--------------------	------------------------

## ROUND TUBE - WALL THICKNESS • LBS PER FT.

1/2" .065, WT: .302 LB/FT	1 1/4" .060, WT: .763 LB/FT	1 1/2" .120, WT: 1.769 LB/FT
3/4" .060, WT: .442 LB/FT	1 1/4" .120, WT: 1.65 LB/FT	2" .060, WT: 1.243 LB/FT
1" .060, WT: .602 LB/FT	1 1/2" .060, WT: .923 LB/FT	

# ROUNDS, SQUARE, REBAR, PIPE



**WE PRIDE OURSELVES IN OUR CUSTOMER SERVICE**

**PLEASE  
CALL FOR CURRENT  
PRICING**



**COLD ROLLED ROUNDS • LBS PER FT.**

1/4" • .167#	5/8" • 1.043#	1 1/4" • 4.170#
3/8" • .376#	3/4" • 1.500#	1 1/2" • 6.010#
1/2" • .668#	1" • 2.670#	

**HOT ROLLED ROUNDS • LBS PER FT.**

1/4" • .167#	9/16" • .845#	1 1/4" • 4.170#
5/16" • .261#	5/8" • 1.043#	1 1/2" • 6.010#
3/8" • .376#	3/4" • 1.500#	2" • 10.69#
1/2" • .668#	1" • 2.670#	



**SQUARE BAR • LBS PER FT.**

1/2" X 1/2" • .850#	1" X 1" • 3.40#	2" X 2" • 13.13#
5/8" X 5/8" • 1.329#	1 1/4" X 1 1/4" • 5.32#	
3/4" X 3/4" • 1.915#	1 1/2" X 1 1/2" • 7.65#	

**REBAR • LBS PER FT.**

#3 (3/8") • .376#	#4 (1/2") • .668#	#5 (5/8") • 1.043#	#6 (3/4") • 1.502#
-------------------	-------------------	--------------------	--------------------



**BLACK PLAIN END PIPE SCHEDULE 40 • LBS PER FT.**

1/2" • .851#	2 1/2" • 5.79#
3/4" • 1.130#	3" • 7.58#
1" • 1.680#	3 1/2" • 9.11#
1 1/4" • 2.273#	4" • 10.79#
1 1/2" • 2.720#	5" • 14.62#
2" • 3.650#	6" • 18.97#

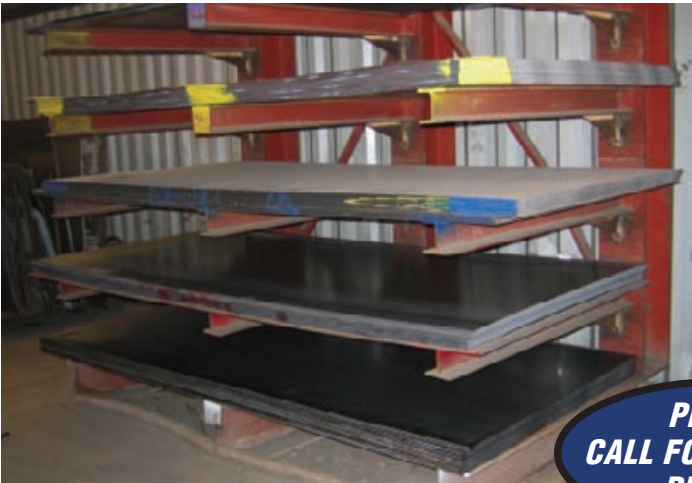
**HAND RAIL UNCOATED PIPE • LBS PER FT.**

1 1/4" SCH 40 • 2.270#	1 1/2" SCH 40 • 2.720#
------------------------	------------------------





## BENDING, SHEARING, CUTTING, LINE BURNING



We can do any job, large or small, with quick turnaround.

We shear sheet and plate 20 GA. thru 1/2" up to 10' long.

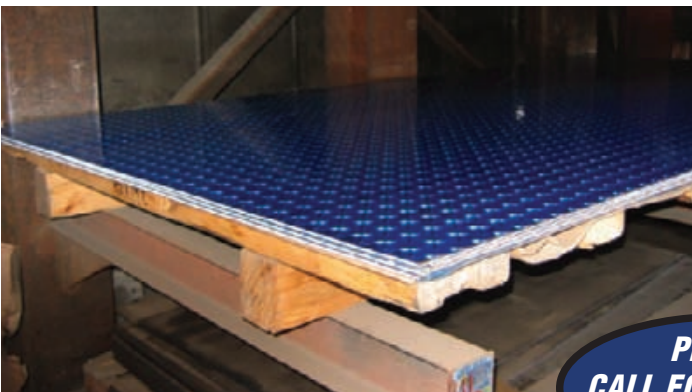
**PLEASE  
CALL FOR CURRENT  
PRICING**

Need thicker steel than 1/2" cut?

We line burn plate over 1/2" thick up to 20' long.

### Custom Bending Available!

Give us a call, we will do our best to produce the material you need.



**PLEASE  
CALL FOR CURRENT  
PRICING**



We do custom bending. What do you need?

Angle, channel, stair pans? We have quick turnaround on your orders.

## BENDING, SHEARING, CUTTING, LINE BURNING

**WASATCH STEEL** 243 West 3300 South • SLC, UT 84115 • (801) 486-4463 • FAX: (801) 486-0919

**SHOP ONLINE**  **Welding Supplies**

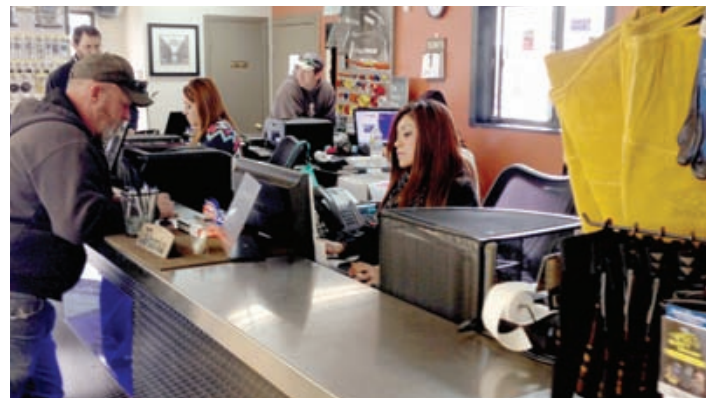


# DOING THE JOB RIGHT THE FIRST TIME

At Wasatch Steel we take pride in doing your job right the first time. We cut, shear, and bend material to your specification.



Our sales team has the expertise to fill your order and get you the right materials and tools for your projects.



**PLEASE  
CALL FOR CURRENT  
PRICING**





# PLATES & PUNCHING



## BASE PLATES

- 3/16" X 3", 4", 5", 6", 8", 10', & 12"
- 1/4" X 3", 4", 5", 6", 8", 10", & 12"
- 3/8" X 3", 4", 6", 8", 10", & 12"
- 1/2" X 3", 4", 6", 8", 10", & 12"
- 3/4" X 12"
- 1" X 12"

## PREPUNCHED BASE PLATES

- 3/16" X 3", 4", 5", 6", & 8"
- 1/4" X 3", 4", 5", 6", 8" 10", & 12"
- 3/8 X 6", 8" 10", & 12"
- 1/2" X 10", & 12"

*WE CAN PUNCH ANY SIZE YOU NEED*

Most of our flat bar is the product of a Utah mill. We are able to cut to your precise measurements. We can punch holes in your flat bar to your specifications. From 3/16" to 4" holes. With your drawing, our trained sales personnel are experienced to ensure a quality product.

*PLEASE CALL FOR CURRENT PRICING*

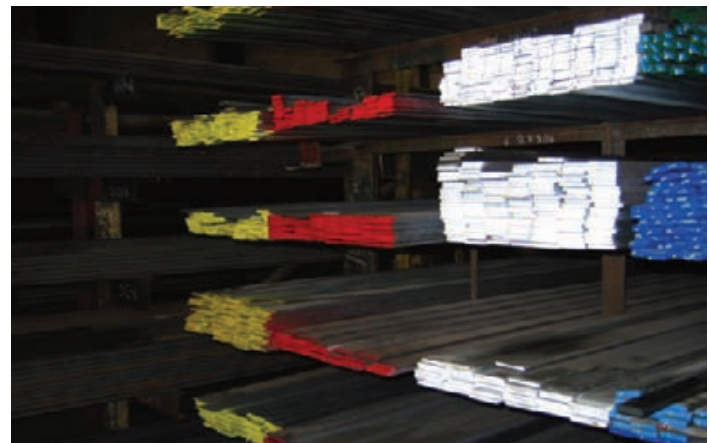
**WASATCH STEEL** 243 West 3300 South • SLC, UT 84115 • (801) 486-4463 • FAX: (801) 486-0919

## DIAMETER PLATES AVAILABLE

- 10 GA X 4"
- 3/16" X 4", 5", 6", 8", 10", & 12"
- 1/4" X 4", 6", 8", 10" & 12"
- 3/8" X 4", 6", 8", 10", & 12"
- 1/2" X 10", & 12"

## GUSSETS

- 1/4" X 3", 4", 6", 8", & 10"
- 3/16" 4" & 6"
- 3/8" x 6", 8", & 10"
- 1/2" x 6", 8", & 10"



**BUY AMERICAN... WE DO!**

**SHOP ONLINE**  **Welding Supplies**



**15**



# PRIME SHEET AND PLATE



## SHEET - LBS PER SQ. FT.

20 GA	4' X 10'	1.5# CR
18 GA	4' X 10'	2.0# CR
16 GA	4' X 8'	2.5# HR
14 GA	4' X 8'	3.13# HR
12 GA	4' X 8'	4.38# HR
11 GA	4' X 8'	5.00# HR
10 GA	4' X 8'	5.63# HR



## PLATE - LBS PER SQ. FT.

3/16"	4' X 8'	7.65# HR
1/4"	4' X 8'	10.2# HR
3/8"	4' X 8'	15.3# HR
1/2"	4' X 8'	20.4# HR
3/4"	8' X 20'	30.6# HR
1"	8' X 20'	40.8# HR

**PLEASE  
CALL FOR CURRENT  
PRICING**



## FLOOR PLATE - LBS PER SQ. FT. STEEL:

14 GA	4' X 8'	3.75#
1/8"	4' X 8'	6.16#
3/16"	4' X 8'	8.71#
1/4"	4' X 8'	11.26#



## ALUMINUM TREAD:

16 GA	4' X 8'	1.01#
11 GA	4' X 8'	2.00#

# GRATING, GRIP STRUT, EXPANDED, TREAD



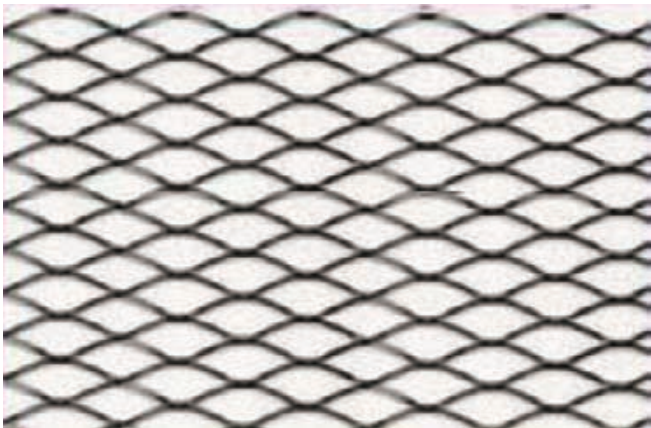
## BAR GRATING

1/8" X 1" BAR GRATING 3' X 3'

1/8" X 1" BAR GRATING 3' X 24'

3/16" X 1 1/2" BAR GRATING 3' X 3'

3/16" X 1 1/2" BAR GRATING 3' X 24'



## EXPANDED METAL

1/4" #18 FLAT 4' X 8'

1/2" #13 RAISED 4' X 8'

1/2" #13 FLAT 4' X 8'

3/4" #13 FLAT 4' X 8'

3/4" #9 RAISED 2' X 6'

3/4" #9 RAISED 3' X 6'

3/4" #9 RAISED 4' X 8'

3/4" #9 FLAT 4' X 8'

1 1/2" #9 RAISED 4' X 8'

1 1/2" #9 FLAT 4' X 8'

1 1/2" #6 RAISED 4' X 8'

3.00 LB RAISED 10' X 2'

4.27 LB RAISED 4' X 8'



## TREAD CHANNEL

DIAMOND GRIP

2" X 11 3/4" 14 GA

2" X 11 3/4" 12 GA

SAFETY TREAD

2" X 12" 13 GA

2" X 12" 11 GA

**WE SPECIAL ORDER OTHER  
SIZES OF DIAMOND GRIP AND  
SAFETY TREAD INCLUDING  
FLAT TREAD**

**PLEASE  
CALL FOR CURRENT  
PRICING**



# SURPLUS STEEL

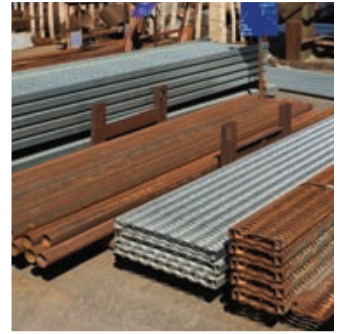
## SURPLUS STEEL *UTAH'S LARGEST SELECTION*

ANGLE - BAR GRATING - BEAMS - CHANNEL - FLAT BAR - PLATE - FLOOR  
PLATE - EXPANDED METAL - SHEET - PIPE - REBAR - ROUND BAR -  
SQUARE TUBE - RECTANGLE TUBE





***“STEEL is in our NAME, SURPLUS is our GAME!”***





# XIs Prime Plate Full Mill Certs



- Custom Cuts to Size & Break Work
- Melted & Rolled in USA – Plate & Sheet Available
- Hard to Find Items? Let Us Find Them
- Large Bending Jobs – No Problem!
- Great Prices on Quantity Custom Cut Tubes From Mill
- Volume Items Available by Truck Load
- Drop Ship to Your Jobsite or We Can Deliver
- Order Online Day or Night Current Price Always



MANY ITEMS ON THE FOLLOWING PAGES ARE IN STOCK AND OTHER COMPONENTS ARE AVAILABLE BY SPECIAL ORDER





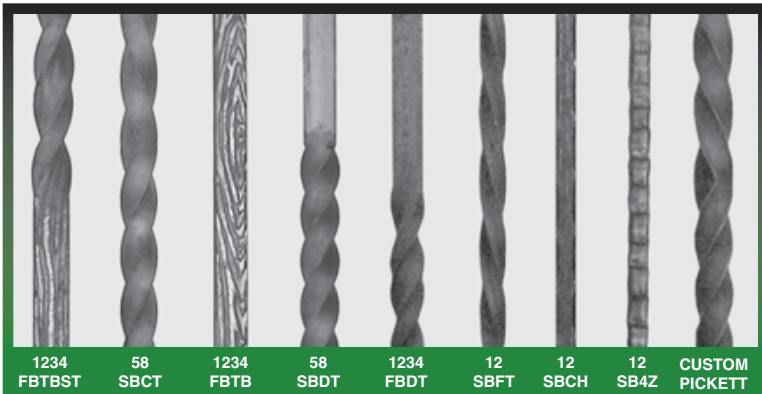
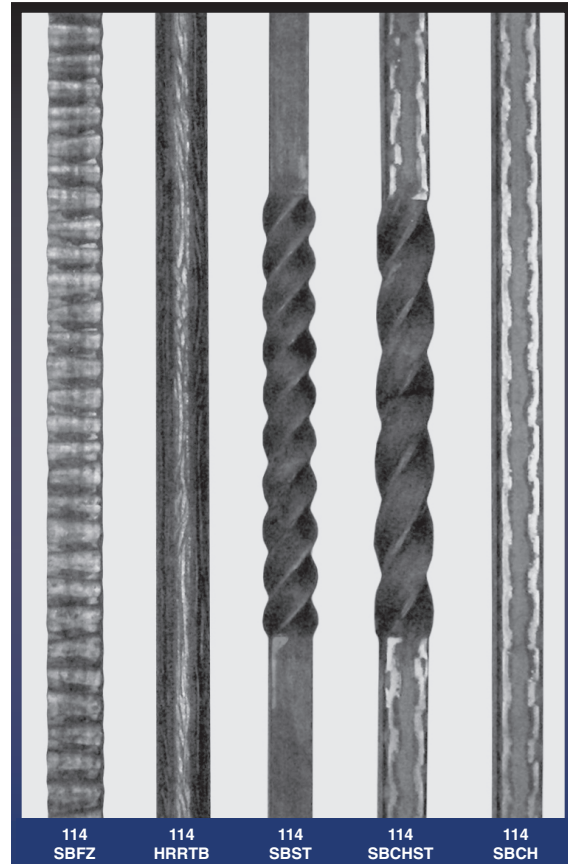
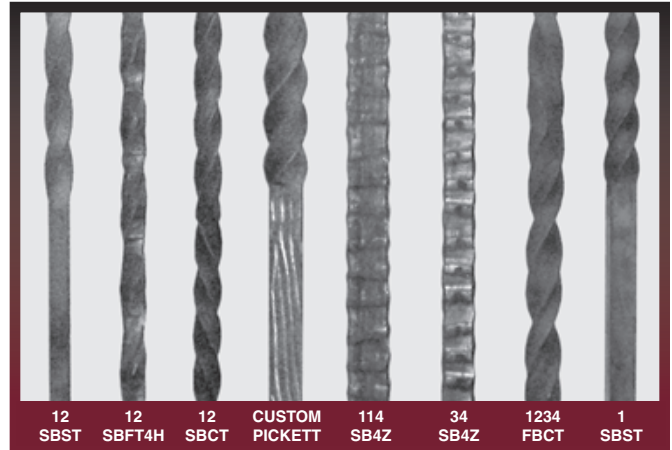
# CUSTOM MADE IN THE USA PICKETS



*WASATCH STEEL'S OWN • UTAH'S OWN • CUSTOM MADE*  
 CORNER HAMMERED - FACE HAMMERED - FACE AND CORNER  
 HAMMERED - TREE BARK - CORNER FORGED - FACE FORGED - FACE  
 AND CORNER FORGED - SINGLE TWIST - DOUBLE TWIST - FULL TWIST  
 - COUNTER TWIST - CUSTOM PICKETS AVAILABLE UPON REQUEST



**CUSTOM PICKETS**  
**MADE IN THE USA**





# CUSTOM MADE IN THE USA PICKETS

12SB	CH	■ 35 1/2" X 1/2"	SQ	CORNER HAMMERED
12SB	FH	35 1/2" X 1/2"	SQ	FACE HAMMERED
12SB	4H	■ 35 1/2" X 1/2"	SQ	FACE & CORNER HAMMERED
12SB	TB	35 1/2" X 1/2"	SQ	TREE BARK
12SB	CZ	35 1/2" X 1/2"	SQ	CORNER FORGED
12SB	FZ	35 1/2" X 1/2"	SQ	FACE FORGED
12SB	4H	■ 35 1/2" X 1/2"	SQ	FACE & CORNER FORGED
12SB	ST	■ 35 1/2" X 1/2"	SQ	SINGLE TWIST
12SB	DT	35 1/2" X 1/2"	SQ	DOUBLE TWIST
12SB	FT	■ 35 1/2" X 1/2"	SQ	FULL TWIST
12SB	CT	■ 35 1/2" X 1/2"	SQ	COUNTER TWIST
CP12SB		35 1/2" X 1/2"	SQ	CUSTOM

1/2"

1SB	CH	35 1/2" X 1"	SQ	CORNER HAMMERED
1SB	FH	35 1/2" X 1"	SQ	FACE HAMMERED
1SB	4H	35 1/2" X 1"	SQ	FACE & CORNER HAMMERED
1SB	TB	35 1/2" X 1"	SQ	TREE BARK
1SB	CZ	35 1/2" X 1"	SQ	CORNER FORGED
1SB	FZ	35 1/2" X 1"	SQ	FACE FORGED
1SB	4Z	35 1/2" X 1"	SQ	FACE & CORNER FORGED
1SB	ST	■ 35 1/2" X 1"	SQ	SINGLE TWIST
1SB	DT	35 1/2" X 1"	SQ	DOUBLE TWIST
1SB	FT	■ 35 1/2" X 1"	SQ	FULL TWIST
1SB	CT	35 1/2" X 1"	SQ	COUNTER TWIST
CP1SB		35 1/2" X 1"	SQ	CUSTOM

1"

58SB	CH	35 1/2" X 5/8"	SQ	CORNER HAMMERED
58SB	FH	35 1/2" X 5/8"	SQ	FACE HAMMERED
58SB	4H	35 1/2" X 5/8"	SQ	FACE & CORNER HAMMERED
58SB	TB	35 1/2" X 5/8"	SQ	TREE BARK
58SB	CZ	35 1/2" X 5/8"	SQ	CORNER FORGED
58SB	FZ	35 1/2" X 5/8"	SQ	FACE HAMMERED
58SB	4Z	35 1/2" X 5/8"	SQ	FACE & CORNER FORGED
58SB	ST	35 1/2" X 5/8"	SQ	SINGLE TWIST
58SB	DT	■ 35 1/2" X 5/8"	SQ	DOUBLE TWIST
58SB	FT	35 1/2" X 5/8"	SQ	FULL TWIST
58SB	CT	■ 35 1/2" X 5/8"	SQ	COUNTER TWIST
CP58SB		35 1/2" X 5/8"	SQ	CUSTOM

5/8"

114SB	CH	■ 35 1/2" X 1 1/4"	SQ	CORNER HAMMER
114SB	FH	35 1/2" X 1 1/4"	SQ	FACE HAMMERED
114SB	4H	35 1/2" X 1 1/4"	SQ	FACE & CORNER HAMMERED
114SB	TB	■ 35 1/2" X 1 1/4"	SQ	TREE BARK
114SB	CZ	35 1/2" X 1 1/4"	SQ	CORNER FORGED
114SB	FZ	■ 35 1/2" X 1 1/4"	SQ	FULL FORGED
114SB	4Z	■ 35 1/2" X 1 1/4"	SQ	FACE & CORNER FORGED
114SB	ST	■ 35 1/2" X 1 1/4"	SQ	SINGLE TWIST
114SB	DT	35 1/2" X 1 1/4"	SQ	DOUBLE TWIST
114SB	FT	■ 35 1/2" X 1 1/4"	SQ	FULL TWIST
114SB	CT	35 1/2" X 1 1/4"	SQ	COUNTER TWIST
CP114SB		35 1/2" X 1 1/4"	SQ	CUSTOM

1 1/4"

34SB	CH	35 1/2" X 3/4"	SQ	CORNER HAMMERED
34SB	FH	35 1/2" X 3/4"	SQ	FACE HAMMERED
34SB	4H	35 1/2" X 3/4"	SQ	FACE & CORNER HAMMERED
34SB	TB	35 1/2" X 3/4"	SQ	TREE BARK
34SB	CZ	35 1/2" X 3/4"	SQ	CORNER FORGED
34SB	FZ	35 1/2" X 3/4"	SQ	FACE FORGED
34SB	4Z	■ 35 1/2" X 3/4"	SQ	FACE & CORNER FORGED
34SB	ST	35 1/2" X 3/4"	SQ	SINGLE TWIST
34SB	DT	35 1/2" X 3/4"	SQ	DOUBLE TWIST
34SB	FT	35 1/2" X 3/4"	SQ	FULL TWIST
34SB	CT	35 1/2" X 3/4"	SQ	COUNTER TWIST
CP34SB		35 1/2" X 3/4"	SQ	CUSTOM

3/4"

1234FB	4F4	35 1/2" X 1/2" X 3/4"	REC	4 SIDE HAMMERED
1234FB	TB	35 1/2" X 1/2" X 3/4"	REC	TREE BARK
1234FB	4Z4	35 1/2" X 1/2" X 3/4"	REC	4 SIDE FORGED
1234FB	ST	35 1/2" X 1/2" X 3/4"	REC	SINGLE TWIST
1234FB	DT	35 1/2" X 1/2" X 3/4"	REC	DOUBLE TWIST
1234FB	FT	35 1/2" X 1/2" X 3/4"	REC	FULL TWIST
1234FB	CT	35 1/2" X 1/2" X 3/4"	REC	COUNTER TWIST
CP1234FB		35 1/2" X 1/2" X 3/4"	REC	CUSTOM

REC

**CUSTOM LENGTHS ARE POSSIBLE AND WELCOMED**



# CAP RAILS & LONG BARS



**MCR 112**  
FITS 1¼" &  
1 ½" SQ TUBE  
OR CHANNEL  
WT 42 LBS



**MCR**  
FITS 1" SQ  
TUBE  
OR CHANNEL



**MCRHT**  
TOP 1½"  
THICKNESS  
.075 HRPO



**114/4**  
10'  
MTL 5/16" X 1 9/16"  
WT 16.5 LBS



**114/5**  
10'  
MTL 5/16" X 1 9/16"  
WT 16.5 LBS



**114/9**  
10'  
MTL 5/16" X 1 3/16"  
WT 12.8 LBS



**114/8**  
10'  
MTL 1 9/16" X 5/16"  
WT 16.5 LBS

## HAMMERED SQUARE TUBE



**12060HT**  
1/2" .060  
SQ TUBE



**34083HT**  
3/4" .083  
SQ TUBE



**1083HT**  
1" .083  
SQ TUBE



**112083HT**  
1½" .083  
SQ TUBE



**2090HT**  
2" .090  
SQ TUBE



**2120HT**  
2" .120  
SQ TUBE



**21083HT**  
2 X 1 .083  
RECTUBE

## 4 SIDED HAMMERED



**124Z20**  
MTL 1/2" X  
35½" SQ BAR

## CORNER HAMMERED



**12CH20**  
MTL 1/2" X  
35½" SQ BAR



**34CH20**  
3/4" X  
35½" SQ BAR



**1CH20**  
1" X  
35½" SQ BAR

10', 20', &  
Custom Lengths  
Available

## VINEYARD RND BAR



**598/11**  
5/16"  
VINEYARD

**598/13**  
1/2"  
VINEYARD

10" & 20' Lengths Available

## TREE BARK SQ BAR



10' & 20'  
Lengths  
Available

**12SBTB20**  
MTL 1/2" SQ

**58SBTB20**  
MTL 5/8" SQ

## ROUND BAR TREE BARK EFFECT



- 516HRRTB 5/16" DIA
- 38HRRTB 3/8" DIA
- 12HRRTB 1/2" DIA
- 916HRRTB 9/16" DIA
- 58HRRTB 5/8" DIA
- 34HRRTB 3/4" DIA

10', 20', &  
Custom Lengths  
Available

HAMMERED ROUND  
APPROX. 10'

600/1	1/4"
600/2	5/16"
600/3	3/8"
600/4	1/2"
600/7	3/4"
600/9	7/8"

158/1      158/6      158/3  
COLLAR BANDING APPROXIMATELY 13'

**PLEASE  
CALL FOR CURRENT  
PRICING**



# STAIR RAILS AND BALUSTERS



**GD158/1**  
 MTL 9/16"  
 6<sup>19</sup>/<sub>64</sub>" W  
 39<sup>1</sup>/<sub>2</sub>" H  
 WT 2.9 LBS



**GD158/2**  
 MTL 9/16"  
 6<sup>19</sup>/<sub>64</sub>" W  
 39<sup>1</sup>/<sub>2</sub>" H  
 WT 2.9 LBS



**GD156/1**  
 MTL 9/16"  
 6<sup>5</sup>/<sub>8</sub>" W  
 39<sup>1</sup>/<sub>2</sub>" H  
 WT 2.9 LBS



**GD156/2**  
 MTL 9/16"  
 6<sup>5</sup>/<sub>8</sub>" W  
 39<sup>1</sup>/<sub>2</sub>" H  
 WT 4.8 LBS



**1051/1**  
 MTL 1/2" SQ  
 39<sup>1</sup>/<sub>2</sub>" H  
 WT 4 LBS

**PLEASE  
 CALL FOR CURRENT  
 PRICING**



**1050/2**  
 MTL 3/8" SQ  
 BAR  
 9<sup>5</sup>/<sub>8</sub>" W  
 28<sup>3</sup>/<sub>8</sub>" H  
 WT 5.7 LBS



**1050/3**  
 MTL 9/16" SQ  
 BAR  
 10<sup>7</sup>/<sub>16</sub>" W  
 28<sup>3</sup>/<sub>8</sub>" H  
 WT 4.4 LBS



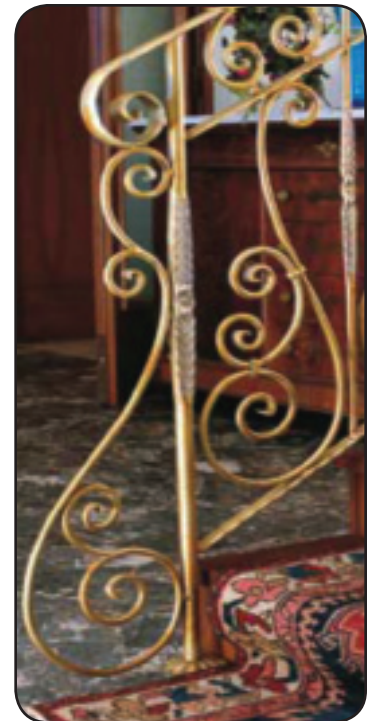
**1050/4**  
 MTL 1/2" DIA  
 BAR  
 10<sup>7</sup>/<sub>16</sub>" W  
 25<sup>3</sup>/<sub>16</sub>" H  
 WT 5 LBS



**540/1**  
 MTL 1/2" DIA  
 9<sup>7</sup>/<sub>8</sub>" W  
 28<sup>3</sup>/<sub>8</sub>" H  
 WT 3.4 LBS



**540/2**  
 MTL 1/2" DIA  
 9<sup>7</sup>/<sub>8</sub>" W  
 28<sup>3</sup>/<sub>8</sub>" H  
 WT 5 LBS



# FORGED, TWISTED PICKETS



**48/3**  
MTL 1/2" SQ  
35 7/16" H  
WT 2.6 LBS

**48/4**  
MTL 1/2" SQ  
35 7/16" H  
WT 2.4 LBS

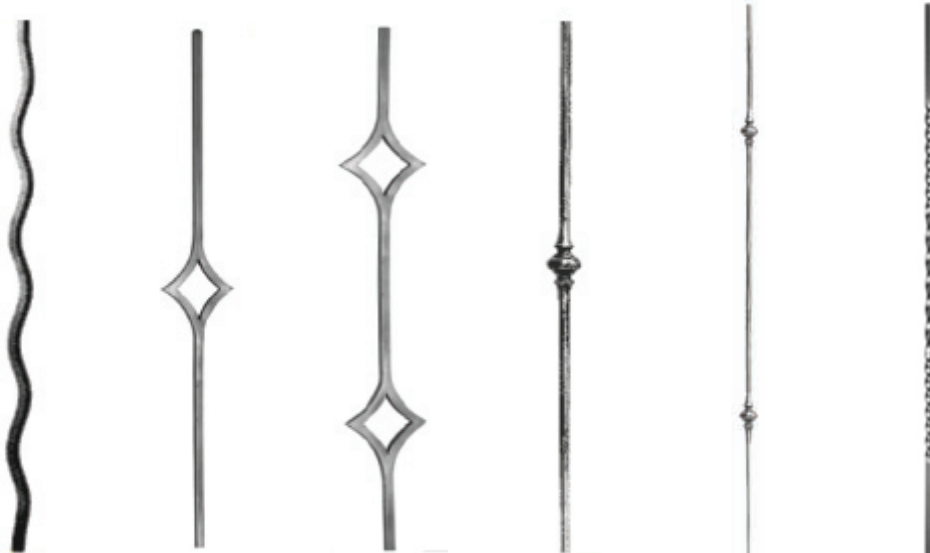
**64/1/4**  
MTL 1/2" SQ  
35 7/16" H  
WT 4 LBS

**48/A/16**  
MTL 1/2" SQ  
35 7/16" H  
WT 2.4 LBS

**48/A/13**  
MTL 1/2" SQ  
35 7/16" H  
WT 2.6 LBS

**GD 176/1**  
MTL 9/16" SQ  
39 3/8" H  
WT 3 LBS

**GD 176/3**  
MTL 9/16" SQ  
39 3/8" H  
WT 3 LBS



**70/D/1**  
MTL 9/16"  
SQ 35 7/16" H  
WT 3 LBS

**GD 23/1**  
MTL 9/16"  
SQ 4 23/32" W  
39 3/8" H  
WT 3.9 LBS

**GD 25/1**  
MTL 9/16"  
SQ 4 23/32" W  
39 3/8" H  
WT 3.9 LBS

**499/1**  
MTL 1/2"  
RND  
39 3/8" H  
WT 3 LBS

**499/2**  
MTL 1/2"  
RND  
39 3/8" H  
WT 3 LBS

**GD106/1**  
1/2" SQ  
THREE TWIST  
35 7/16" H  
WT 2.2 LBS



**PLEASE  
CALL FOR CURRENT  
PRICING**

*Pickets also available in Powder Coated.*

# FORGED PICKETS



**505/3**  
MTL 9/16"  
SQ, 39<sup>3</sup>/<sub>8</sub>" H  
WT 3.5 LBS



**505/4**  
MTL 9/16"  
SQ, 39<sup>3</sup>/<sub>8</sub>" H  
WT 4.2 LBS



**508/3**  
MTL 9/16  
DIA, 39<sup>3</sup>/<sub>8</sub>" H  
WT 4 LBS



**108/A/1**  
MTL 1/2" SQ  
39<sup>3</sup>/<sub>8</sub>" H  
WT 3.7 LBS



**108/A/2**  
MTL 1/2" SQ  
39<sup>3</sup>/<sub>8</sub>" H  
WT 3.5 LBS



**105/1**  
MTL 1/2" SQ  
39<sup>3</sup>/<sub>8</sub>" H  
WT 3.3 LBS



**105/2**  
MTL 1/2" SQ  
39<sup>3</sup>/<sub>8</sub>" H  
WT 3 LBS



**105/3**  
MTL 9/16" HAM  
SQ, 39<sup>1</sup>/<sub>2</sub>" H  
WT 3.5 LBS



**12SB4Z**  
MTL 1/2" HAM  
SQ, 35<sup>1</sup>/<sub>2</sub>" H  
WT 3.5 LBS



**64/I/2**  
MTL 9/16" SQ  
35<sup>7</sup>/<sub>16</sub>" H  
WT 3.6 LBS



**64/1/3**  
MTL 9/16" SQ  
35<sup>7</sup>/<sub>16</sub>" H  
WT 4.3 LBS



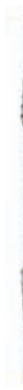
**1175/3**  
MTL 1/2" SQ  
Vine Bar  
39<sup>1</sup>/<sub>2</sub>" H



**1174/5**  
MTL 1/2" SQ  
Vine Bar  
39<sup>1</sup>/<sub>2</sub>" H



**64/F/3**  
MTL 9/16" SQ  
35<sup>7</sup>/<sub>16</sub>" H  
WT 3 LBS



**64/F/5**  
MTL 9/16" SQ  
35<sup>7</sup>/<sub>16</sub>" H  
WT 3 LBS



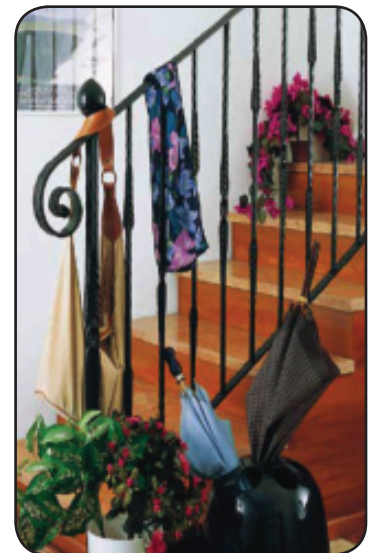
**755/5**  
MTL 1/2" SQ  
BAR, 35<sup>7</sup>/<sub>16</sub>" H  
WT 2.5 LBS



**755/6**  
MTL 1/2" SQ  
BAR, 35<sup>7</sup>/<sub>16</sub>" H  
WT 2.5 LBS

*Pickets also available in Powder Coated.*

**PLEASE  
CALL FOR CURRENT  
PRICING**





# FORGED, TWISTED PICKETS



**50/5**  
1/2" SQ  
1 3/16" W  
35 7/16" H  
WT 2.1 LBS



**50/6**  
1/2" SQ  
1 3/16" W  
35 7/16" H  
WT 2.5 LBS



**617/1**  
1/2" SQ  
1 3/16" W  
35 7/16" H  
WT 2.2 LBS



**617/2**  
3 9/16" W  
35 7/16" H  
WT 1.8 LBS



**617/6**  
3 9/16" W  
35 7/16" H  
WT 1.9 LBS



**617/7**  
35 7/16" H  
WT 1.7 LBS



**615/4**  
2 3/4" W  
35 7/16" H  
WT 2.1 LBS



**12SBDT**  
1/2" SQ  
35 1/2" H  
WT 2.5 LBS



**12SBST**  
1/2" SQ  
35 7/16" H  
WT 1.77 LBS



**12SBFT**  
1/2" SQ  
2 3/4" W  
35 1/2" H  
WT 2.1 LBS



**12SBCT**  
MTL 1/2" SQ  
35 1/2" H  
WT 2.5 LBS



**48/1**  
MTL 1/2" SQ  
4 3/4" W  
35 7/16" H  
WT 2.6 LBS



**48/2**  
MTL 1/2" SQ  
4 3/4" W  
35 7/16" H  
WT 2.4 LBS



**Pickets also available in Powder Coated.**

## FORGED PICKETS



**1770/1**

MTL 1/2" DIA  
39<sup>3</sup>/<sub>8</sub>" H  
WT 2.3 LBS



**1770/5**

MTL 9/16" DIA  
39<sup>3</sup>/<sub>8</sub>" H  
WT 4.4 LBS



**99/1**

MTL 1/2" SQ  
39<sup>3</sup>/<sub>8</sub>" H  
WT 2.5 LBS



**99/2**

MTL 1/2" SQ  
39<sup>3</sup>/<sub>8</sub>" H  
WT 2.5 LBS



**497/1**

MTL 1/2" DIA  
39<sup>3</sup>/<sub>8</sub>" H  
WT 2.2 LBS



**497/2**

MTL 1/2" DIA  
39<sup>3</sup>/<sub>8</sub>" H  
WT 2.7 LBS



*Pickets also available in Powder Coated.*

## NEWAL POST BALUSTERS



**98/1**

1<sup>3</sup>/<sub>4</sub>" MIDDLE  
3/8" ENDS, TAPERED WT 5 LBS



**113/3**

MTL 3/4" DIA  
43<sup>1</sup>/<sub>4</sub>" H  
WT 8 LBS



**113/1**

MTL 3/4" DIA  
43<sup>1</sup>/<sub>4</sub>" H  
WT 8 LBS



**148/1**

MTL 1<sup>3</sup>/<sub>16</sub>" DIA  
35<sup>7</sup>/<sub>16</sub>" H  
WT 2 LBS



**34SB 4Z**

35<sup>1</sup>/<sub>2</sub>" X 3/4" SQ  
FACE & CORNER  
FORGED



**1SB ST**

35<sup>1</sup>/<sub>2</sub>" X 1" SQ  
SINGLE TWIST



**114SBTB**

35<sup>1</sup>/<sub>2</sub>" X 1<sup>1</sup>/<sub>4</sub>" SQ  
TREE BARK



**114SB ST**

35<sup>1</sup>/<sub>2</sub>" X 1<sup>1</sup>/<sub>4</sub>" SQ  
SINGLE TWIST



**114SBCHST**

35<sup>1</sup>/<sub>2</sub>" X 1<sup>1</sup>/<sub>4</sub>" SQ  
BAR, SINGLE  
TWIST, CORNER  
HAMMERED



**114SBCH**

35<sup>1</sup>/<sub>2</sub>" X 1<sup>1</sup>/<sub>4</sub>" SQ  
CORNER  
HAMMERED

# BELLY PICKETS



**70/D/5**  
MTL 9/16" SQ  
35<sup>7</sup>/<sub>16</sub>" H  
WT 4.3 LBS



**64/H/10**  
MTL 9/16 SQ  
35<sup>7</sup>/<sub>16</sub>" H  
WT 3.1 LBS



**46/6**  
MTL 5/32 X  
1<sup>9</sup>/<sub>16</sub>, 35<sup>7</sup>/<sub>16</sub>" H  
WT 3.2 LBS



**1783/3**  
MTL 1/2" DIA  
39<sup>1</sup>/<sub>2</sub>" H  
WT 4.3 LBS



**58BELLY**  
5/8 SQ TUBE  
35<sup>9</sup>/<sub>16</sub>" H  
WT 1.8 LBS



**64/D/4**  
1/2" SQ  
35<sup>7</sup>/<sub>16</sub>" H  
WT 2.3 LBS



**1782/7**  
MTL 9/16" SQ  
39<sup>3</sup>/<sub>8</sub>" H  
WT 5.8 LBS



**1782/8**  
MTL 9/16" SQ  
39<sup>3</sup>/<sub>8</sub>" H  
WT 6.2 LBS



**1782/9**  
MTL 9/16" SQ  
39<sup>3</sup>/<sub>8</sub>" H  
WT 6.8 LBS



**316112BELLY**  
MTL 3/16" X  
1/12" FB X 36" H  
WT 2.8 LBS

**PLEASE  
CALL FOR CURRENT  
PRICING**



***Pickets also available in Powder Coated.***



# SNAP ONS FOR 1/2" BAR OR TUBE



**37/3**  
MTL 1/2" X 1/4"  
3 3/4" W X 13 9/16" H  
WT .6 LBS



**36/1**  
MTL 1/2" X 1/4"  
8 5/8" W X 9 7/8" H  
WT 1.7 LBS



**35/1**  
MTL 1/2" X 1/4"  
8 1/16" W X 17 1/2" H  
WT 2.7 LBS



**36/2**  
MTL 1/2" X 1/4"  
9 1/16" W X 15" H  
WT 2.8 LBS



**35/2**  
MTL 1/2" X 1/4"  
7 7/8" W X 13 9/16" H  
WT 2.1 LBS

## SCROLLS



**80/A/1**  
MTL 1/2"  
X 1/4"  
4 5/16" W  
10 5/8" H  
WT .75 LBS



**80/A/12**  
MTL 1/2"  
X 1/4"  
2 3/4" W  
7 1/2" H  
WT .5 LBS



**80/A/11**  
MTL 1/2"  
X 1/4"  
2 9/16" W  
5 7/8" H  
WT .4 LBS



**64/G/3**  
MTL 1/2" X 1/4"  
4-1 7/8" W X  
5-7 7/8" H  
WT .5 LBS



**64/G/6**  
MTL 1/2"  
X 1/4"  
2" W  
9 9/16" H  
WT .5 LBS



**64/G/12**  
MTL 1/2"  
X 1/4"  
3.5" W  
12" H  
WT .5 LBS



**1309/1**  
MTL 1/2"  
DIA  
4 15/16" W  
17 3/4" H  
WT 1.9 LBS



**1309/4**  
MTL 1/2"  
SQ  
4 15/16" W  
17 3/4" H  
WT 3.0 LBS



**1309/5**  
MTL 1/2"  
SQ  
4 15/16" W  
17 3/4" H  
WT 4.1 LBS



**1039/2**  
MTL 9/16"  
SQ  
7/8" W  
11 3/16" H  
HAMMERED



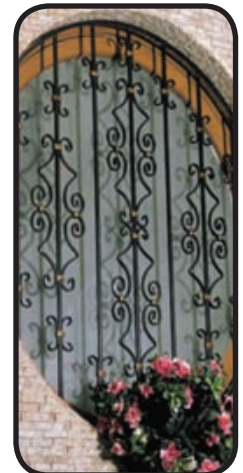
**80/A/3**  
MTL 1/2"  
X 1/4"  
2 3/8" W  
4 5/16" H  
WT .3 LBS



**80/A/9**  
MTL 1/2"  
X 1/4"  
2 3/4" W  
4 1/8" H  
WT .4 LBS



**80/A/10**  
MTL 1/2"  
X 1/4"  
3 3/4" W  
5 1/2" H  
WT .5 LBS



# HAND FORGED PANELS, ROSETTES



**GD003**

MTL 5/8, 5/16, 23<sup>3</sup>/<sub>4</sub>"H,  
28<sup>1</sup>/<sub>32</sub>"W, WT 18.5 LBS



**474/1**

MTL 1/2 SQ, 14<sup>31</sup>/<sub>32</sub>"H,  
29<sup>23</sup>/<sub>32</sub>"W HAMMERED,  
WT 10.6 LBS



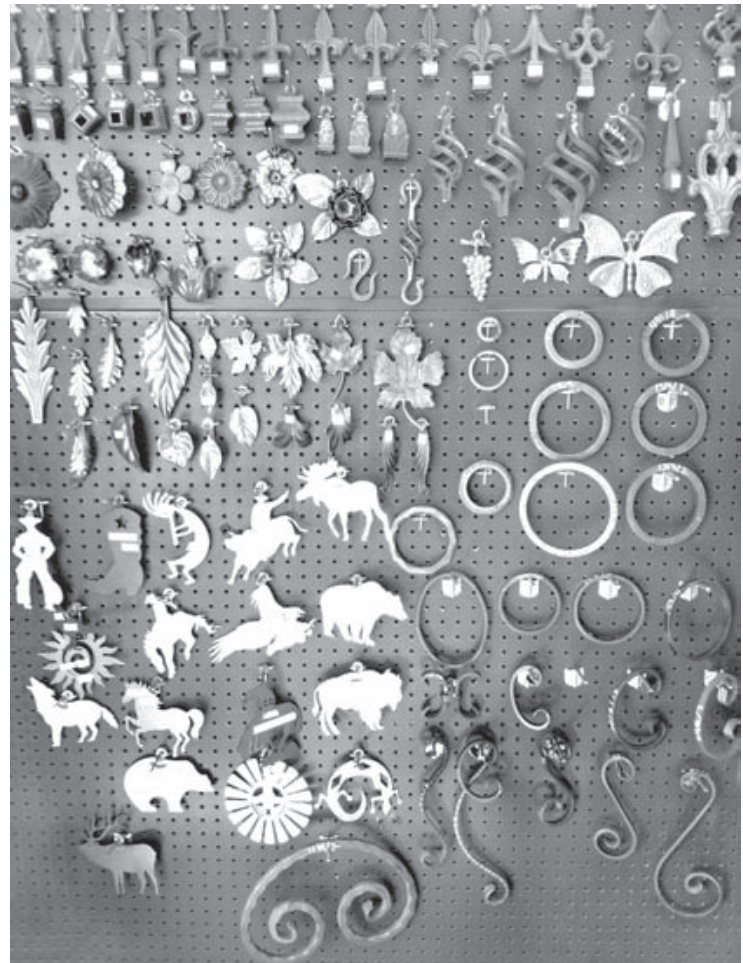
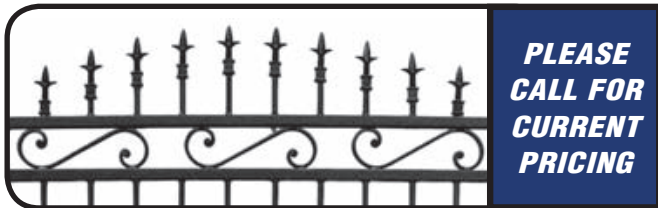
**480/1**

MTL 1/2 SQ, 26" H, 26" W  
WT 23 LBS



**116/D/2**

MTL 3/4 X 1/4  
17<sup>23</sup>/<sub>32</sub>"H, 50<sup>13</sup>/<sub>32</sub>" W  
WT 7.4 LBS



## ROSETTES



**1013/1**

MTL 1/2" DIA  
11<sup>5</sup>/<sub>8</sub>" DIA, WT 5.3 LBS



**1013/2**

MTL 1/2" SQ  
11<sup>5</sup>/<sub>8</sub>" DIA, WT 6.6 LBS



**17/1**

MTL 5/16" SQ  
9<sup>7</sup>/<sub>8</sub>" DIA, WT 2 LBS



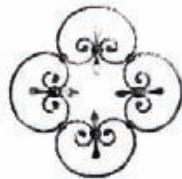
**17/2**

MTL 5/16" SQ  
9<sup>7</sup>/<sub>8</sub>" DIA, WT 2 LBS



**26/C/1**

MTL 1/2" SQ  
16<sup>5</sup>/<sub>8</sub>"W X 20<sup>5</sup>/<sub>8</sub>"H, WT 10 LBS



**24/2**

MTL 3/8 X 3/16  
15" DIA, WT 3.3 LBS



**1652/1**

MTL 1/2" x 1/4"  
9<sup>7</sup>/<sub>8</sub>" DIA, WT 1.6 LBS



**1653/1**

MTL 1/2" x 1/4"  
9<sup>7</sup>/<sub>8</sub>" DIA, WT 1.9 LBS



# CAST IRON, FLORAL ELEMENTS, LEAVES



**94/B/6**  
4<sup>5</sup>/<sub>16</sub>"D X 5<sup>5</sup>/<sub>32</sub>"D  
WT .4 LBS



**116/A/5**  
3<sup>3</sup>/<sub>4</sub>"D MTL  
1<sup>1</sup>/<sub>8</sub>"THICK  
WT .6 LBS



**697/4**  
2<sup>9</sup>/<sub>16</sub>"D MTL  
1<sup>1</sup>/<sub>8</sub>"THICK  
WT .2 LBS



**126/3**  
3<sup>1</sup>/<sub>8</sub>"D 3<sup>1</sup>/<sub>16</sub>"THICK  
WT .3 LBS



**756/2**  
3<sup>5</sup>/<sub>32</sub>"D  
M5 THREAD



**661/3**  
3<sup>1</sup>/<sub>16</sub>"THICK  
4<sup>5</sup>/<sub>16</sub>"W X 6<sup>1</sup>/<sub>8</sub>"H



**661/4**  
3<sup>3</sup>/<sub>16</sub>"THICK  
3"W X 4<sup>15</sup>/<sub>16</sub>"H



**136/2**  
1<sup>1</sup>/<sub>8</sub>"THICK  
1<sup>9</sup>/<sub>16</sub>"W X 4"H



**136/1**  
1<sup>1</sup>/<sub>8</sub>"THICK  
1<sup>9</sup>/<sub>16</sub>"W X 4"H



**136/4**  
1<sup>1</sup>/<sub>8</sub>"THICK  
2<sup>3</sup>/<sub>4</sub>"W, 2<sup>3</sup>/<sub>8</sub>"H



**136/3**  
1<sup>1</sup>/<sub>8</sub>"THICK  
2<sup>3</sup>/<sub>4</sub>"W, 2<sup>3</sup>/<sub>8</sub>"H



**138/10**  
.0197 THICK  
1<sup>3</sup>/<sub>4</sub>"W, 3<sup>11</sup>/<sub>32</sub>"H



**140/1**  
.0197 THICK  
1"W, 2<sup>1</sup>/<sub>8</sub>"H



**140/3**  
.0118 THICK  
1<sup>7</sup>/<sub>16</sub>"W, 3<sup>1</sup>/<sub>8</sub>"H



**140/2**  
.0118 THICK  
1<sup>1</sup>/<sub>8</sub>"W, 2<sup>7</sup>/<sub>16</sub>"H



**702/2**  
.0197 THICK  
2<sup>1</sup>/<sub>16</sub>"W, 2<sup>9</sup>/<sub>16</sub>"H



**702/1**  
.0197 THICK  
2<sup>7</sup>/<sub>16</sub>"W, 4<sup>5</sup>/<sub>16</sub>"H



**1406/9**  
3<sup>15</sup>/<sub>16</sub>" D  
MATL 1<sup>3</sup>/<sub>16</sub>"



**1406/3**  
5<sup>1</sup>/<sub>2</sub>" D  
MATL 1<sup>9</sup>/<sub>16</sub>"



**702/3**  
.0197 THICK  
3<sup>1</sup>/<sub>8</sub>"W, 7<sup>7</sup>/<sub>8</sub>"H



**139/4**  
.0118 THICK  
2<sup>3</sup>/<sub>64</sub>"W, 7<sup>7</sup>/<sub>8</sub>"H



**139/5**  
.0118 THICK  
1<sup>3</sup>/<sub>8</sub>"W, 3<sup>15</sup>/<sub>16</sub>"H



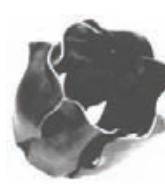
**136/5**  
.0197 THICK  
2<sup>9</sup>/<sub>16</sub>"D, 1<sup>3</sup>/<sub>16</sub>"H



**136/6**  
.0197 THICK  
2<sup>1</sup>/<sub>8</sub>"D, 1<sup>9</sup>/<sub>64</sub>"H



**1406/7**  
3<sup>9</sup>/<sub>16</sub>" D  
MATL 1"



**136/7**  
.0197 THICK  
1<sup>1</sup>/<sub>2</sub>"D, 1<sup>9</sup>/<sub>16</sub>"H



**140/4**  
.0197 THICK  
1<sup>3</sup>/<sub>8</sub>"W, 3<sup>15</sup>/<sub>16</sub>"H



**140/5**  
.0197 THICK  
2<sup>3</sup>/<sub>8</sub>"W, 2<sup>23</sup>/<sub>32</sub>"H



**139/1**  
.0197 THICK  
1<sup>3</sup>/<sub>8</sub>"W, 3<sup>15</sup>/<sub>16</sub>"H



**139/2**  
.0197 THICK  
1<sup>39</sup>/<sub>64</sub>"W, 3<sup>9</sup>/<sub>16</sub>"H



**604/11**  
5<sup>5</sup>/<sub>64</sub>" MATL  
1<sup>1</sup>/<sub>4</sub>"W, 1<sup>3</sup>/<sub>4</sub>"H



**604/12**  
1<sup>1</sup>/<sub>8</sub>" MATL  
1<sup>1</sup>/<sub>4</sub>"W, 3<sup>1</sup>/<sub>8</sub>"H



**HK101**  
Forged Hook w/Basket  
1<sup>1</sup>/<sub>4</sub>"W, 7<sup>1</sup>/<sub>8</sub>"H



**HK106**  
Hand Forged S-Hook  
1<sup>7</sup>/<sub>16</sub>"W, 3<sup>1</sup>/<sub>8</sub>"H



# RINGS, STAMPED STEEL, BASKETS\*



**156/A/5**  
MTL 1/4" X  
1/4"  
2 31/64" DIA  
WT .1 LBS



**156/A/4**  
MTL 1/4" X  
1/4"  
2" DIA  
WT .1 LBS



**156/A/1**  
MTL 1/4" X  
1/4"  
1" DIA  
WT .1 LBS



**157/16**  
MTL 1/2" X  
1/4"  
4 1/2 X 6 5/16"  
WT .5 LBS



**157/2**  
MTL 1/2" X  
1/4"  
4 1/2" DIA  
WT .4 LBS

**157/3**  
MTL 1/2" X  
1/4"  
5 1/8" DIA  
WT .4 LBS

**157/1**  
MTL 1/2" X  
1/4"  
3 15/16" DIA  
WT .4 LBS



**1317/2**  
1/2" SQ  
MTL 5 1/8"  
DIA  
WT .9 LBS



**1317/1**  
1/2" SQ  
MTL 4 1/2"  
DIA  
WT .8 LBS



**491/8**  
MTL 1/2" SQ  
3 5/16" DIA  
WT .6 LBS



**TR-6**  
6" DIA  
1/2" SQ  
TUBE  
16GA.



**TR-5**  
5" DIA  
1/2" SQ  
TUBE  
16GA.



**TR-312**  
3 1/2" DIA  
1/2" SQ  
TUBE  
16GA.



**HR-412**  
MTL 1/2" SQ  
BAR  
4 1/2" DIA  
WT .5 LBS



**HR-312**  
MTL 1/2" SQ  
BAR  
3 1/2" DIA  
WT .5 LBS

## STAMPED STEEL



**137/8**  
MTL .0197  
4-5/16" W  
2-9/16" H  
WT .1 LBS



**137/9**  
MTL .0197  
2" W  
3 9/16" H  
WT .1 LBS



**137/10**  
MTL .03125  
4-5/16" W  
6-7/8" H  
WT .1 LBS

## BASKETS



**159/6**  
3/4" SQ X  
6 1/2" H  
3 1/8" DIA  
WT 1.5 LBS



**159/5**  
5/8" SQ X  
5 3/4" H  
2 9/16" DIA  
WT .9 LBS



**A159/3**  
1/2" SQ X  
3 1/8" H  
2 3/8" DIA  
WT .5 LBS



**158/B/7**  
1/4" SQ  
2 3/4" DIA  
WT .5 LBS

**PLEASE  
CALL FOR CURRENT  
PRICING**



**\*NOTE:** These products may be imported.

Quality, shape, and size may vary with each order. When ordering these products, we suggest purchasing the project's full amount needed in order to avoid mismatches.

## QUALITY CAST IRON FINIALS\*



**SP-5A**  
4" H 1" W  
FITS 1/2" SQ



**SP-5D**  
4.25" H 1" W  
FITS 3/4" SQ



**SP-3A**  
4" H 1" W  
FITS 1/2" SQ



**SP-3D**  
4" H 1" W  
FITS 3/4" SQ



**SP-6A**  
4" H 1" W  
FITS 1/2" SQ



**SP-6D**  
4" H 1" W  
FITS 3/4" SQ



**SP-4A**  
3.75" H 2.5" W  
FITS 1/2" SQ



**SP-4D**  
4" H 2.5" W  
FITS 3/4" SQ



**SP-2A**  
4.5" H 2.5" W  
FITS 1/2" SQ



**SP-2D**  
4.5" H 2.5" W  
FITS 3/4" SQ



**SP-7A**  
4" H 2.5" W  
FITS 1/2" SQ



**SP-7D**  
4.625" H 2.5" W  
FITS 3/4" SQ



**SP-46C**  
4.25" H 2.75" W  
FITS 1/2" SQ



**SP-26A**  
5" H 3" W  
FITS 1/2" SQ



**SP-24A**  
4" H X 3" W  
FITS 1/2" SQ



**SP-20A**  
5.5" H 3.5" W  
FITS 1/2" SQ



**SP-27A**  
4.75" H 3" W  
FITS 1/2" SQ



**SP-23A**  
5.5" H 3" W  
FITS 1/2"



**MI-810**  
FITS 1" SQ



**MI-834**  
FITS 3/4" SQ



**MI-812**  
FITS 1/2" SQ



**120/1**  
MTL 9/16" DIA,  
8<sup>21</sup>/<sub>32</sub>" H, WT 1.4 LBS



**121/4**  
MTL 1" DIA  
5<sup>1</sup>/<sub>8</sub>" H, WT .7 LBS

**\*NOTE:** These products may be imported.

Quality, shape, and size may vary with each order. When ordering these products, we suggest purchasing the project's full amount needed in order to avoid mismatches.

## CAST IRON KNUCKLES & SHOES



**1491/3**  
1/2" SHOE  
1.75" H  
1.5" W



**1491/1**  
1/2" SHOE  
1.75" H  
1.5" W



**1491/4**  
9/16" SHOE  
2" H X 2" W



**1491/2**  
9/16" SHOE  
1.75" H  
1.75" W



**128/2**  
9/16" COLLAR  
1.75" H  
1.5" W



**MI-1E**  
1" COLLAR  
2" H X 2" W



**MI-ID**  
3/4" COLLAR  
1.75" H  
1.75" W



**MI-1 A**  
1/2" COLLAR  
1.75" H  
1.5" W

**WASATCH STEEL** 243 West 3300 South • SLC, UT 84115 • (801) 486-4463 • FAX: (801) 486-0919

**SHOP ONLINE** Welding Supplies



# CAST IRON POST CAPS, PLUGS & END PIECES



**MI-126**  
6"



**MI-119**  
4"



**MI-120**  
3"



**MI-121**  
2 1/2"



**MI-118**  
2"



**MI-112**  
1 1/2"



**MI-114**  
1 1/4"



**MI-116**  
1"



**MI-811**  
6"



**MI-145**  
4"



**MI-144**  
3"



**MI-147**  
2 1/2"



**MI-143**  
2"



**MI-142**  
1 1/2"



**MI-141**  
1"



**PL-400**  
1/2"



**PL-404**  
3/4"



**PL-406**  
1"



**PL-408**  
1 1/4"



**PL-410**  
1 1/2"



**PL-412**  
2"



**PL-422**  
2" X 1"

**ROUND Plastic Plugs Available – 3/4", 1", 1 1/2", 2"**



**MI-4XL**  
FITS MCR-112



**MI-4X**  
FITS MCR



**812/12**  
FITS MCR-112  
3.8 LBS



**812/13**  
FITS MCR  
3.0 LBS



**MI-MCR 112**  
FITS MCR-112  
2.8 LBS



**MI-MCR**  
FITS MCR  
2.4 LBS



**PLEASE  
CALL FOR CURRENT  
PRICING**



**1377/40/T**  
FITS MCR-112,  
5-7/8"L, 13-3/4"H  
4.13 LBS



**1377/41/T**  
FITS MCR,  
5-7/8"L, 13-3/4"H  
2.8 LBS



# BARREL, BUTT, BATWING & CONTINUOUS HINGES



**GH-207**  
7" GREASE  
FITTINGS,  
BALL BEARING



**GH-205**  
5" GREASE  
FITTINGS,  
BALL BEARING



**GH-203**  
3"  
GREASED



**GH-208**  
8" H  
1 3/16 DIA  
3/4" PIN



**GH-206**  
6" H  
3/4" DIA  
7/16" PIN



**GH-204**  
4" H  
5/8" DIA  
5/16" PIN

## BUTT HINGES



**GH-506**  
5.91 W X 5.91 L  
.197" THICK  
.433 PIN



**GH-505**  
4.84 W X 4.92 L  
.177" THICK  
.394 PIN



**GH-504**  
5.94 W X 3.94 L  
.138" THICK  
.315 PIN



**GH-405**  
5.46 W X 3.54 L  
.138" THICK  
.276 PIN



**GH-503**  
2.87 W X 2.95 L  
.126" THICK  
.268 PIN



**GH-404**  
2.50 W X 2.55 L  
.120" THICK  
.236 PIN



**GH-197**  
1.97 W X 1.97 L  
.098" THICK  
.197 PIN

## BATWING HINGES



**GH-130**  
FEMALE



**GH-132**  
MALE



**Wing Hinge**  
3.5" X 7"

## CONTINUOUS HINGES

Part#	Material Thickness	Open Width	Pin Dia	Knuckle Length	Stock Length
WSF1151	.060"	1 1/16"	.120	1/2"	72"
WSF1152	.060"	1 1/4"	.120	1/2"	72"
WSF1153	.060"	1 1/2"	.120	1/2"	72"
WSF1155	.060	" 2"	.120	1/2"	72"
WSF1159	.060"	3"	.120	1/2"	72"
WSF1303	.074"	1 1/2"	.250	1"	72"
WSF1307	.074"	2 1/2"	.250	1"	72"
WSF1309	.074"	3"	.250	1"	72"
WSF1313	.074"	4"	.250	1"	72"

# PIPE ACCESSORIES



**4" PIPE  
END CAP**



**3" PIPE  
END CAP**



**2" PIPE  
END CAP**



**1 1/2" PIPE  
END CAP**



**1 1/4" PIPE  
END CAP**



**1" PIPE  
END CAP**



**2"  
90 DEGREE  
SEAMLESS  
ELBOW**



**1 1/2"  
90 DEGREE  
SEAMLESS  
ELBOW**



**1 1/4"  
90 DEGREE  
SEAMLESS  
ELBOW**



**2"  
45 DEGREE  
SEAMLESS  
ELBOW**



**1 1/2"  
45 DEGREE  
SEAMLESS  
ELBOW**



**1 1/4"  
45 DEGREE  
SEAMLESS  
ELBOW**

## HAND RAIL UNCOATED PIPE- LBS PER FT.

1 1/4" SCH40 2.270#

1 1/2" SCH40 2.720#

# BRACKETS SPHERES



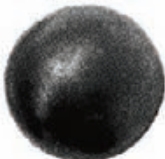
**MI-219**

7/16" HOLE 2 3/4" RND  
2 15/16 FROM WALL TO RAIL CENTER



**MI-453A**

FOR SQ 2 3/4" H 2 1/2" w  
EXTENDS 2 1/2" FROM WALL



**116/F/5**  
2" DIA  
WT 1.3 LB



**116/F/4**  
1 9/16" DIA  
WT .6 LB



**116/F/3**  
1 3/16" DIA  
WT .3 LB



**116/F/2**  
1" DIA  
WT .1 LB



**116/F/1**  
3/4" DIA  
WT .08 LB



**117/9**  
2 3/4 DIA  
WT 3.1 LB



**117/2**  
3/4 DIA  
WT .1 LB

## HARDWARE\*



**GH-100**  
ZINC W/  
Holes



**GH-101**  
BARE NO  
Holes



**GH-103**  
SLIDE  
BOLT



**GH-122-12**  
12" Zinc plated  
w/ brackets



**GH-122-18**  
18" Zinc plated  
w/ brackets



**9" SPRING  
CLOSER**



**12" SPRING  
CLOSER**



**LB-150**  
SINGLE  
LOCK BOX



**LB-250**  
DOUBLE  
LOCK BOX



**SC-1020**  
2 1/2"  
SWIVEL



**SC-1030**  
3"  
SWIVEL



**SF2**  
RECEIVES  
2" SQ



**SF112**  
RECEIVES  
1 1/2" SQ



**SF114**  
RECEIVES  
1 1/4" SQ



**Spring Tube  
Latch**  
5/8"



**Stall Latch**



**Spring Latch**  
1/2"



**Wing Hinge**  
3.5" X 7"



**Spring Latch**  
w/Rubber Grip



**Slam Action  
Gate Latch**  
6" Right & Left

## WELD TABS\*



**WT-449**  
1/8" x 3 1/2"  
X 1"  
3/8" Hole



**WT-4415**  
3/16" x 1 1/2"  
x 4"  
3/8" Hole



**WT-445**  
1/8" x 3" x  
7/8" x 3"  
3/8" Hole



**WT-441**  
1/8" x 3 3/8"  
X 2"  
3/8" Hole



**WT-442**  
1/8" x 2 5/8"  
X 1"  
3/8" Hole



**WT-443**  
1/8" x 2 1/4"  
X 1"  
3/8" Hole



**WT-444**  
1/8" x 1 5/8"  
X 1"  
3/8" Hole



**WT-447**  
1/8" x 3 1/4"  
X 1"  
3/8" Holes



**WT-446**  
1/8" x 3 1/8"  
X 1"  
3/8" Holes

**PLEASE  
CALL FOR CURRENT  
PRICING**

**\*NOTE:** These products may be imported.

Quality, shape, and size may vary with each order. When ordering these products, we suggest purchasing the project's full amount needed in order to avoid mismatches.

**WE HAVE THE SOURCES TO FIND WHAT YOU NEED. JUST GIVE US A CALL!**

**WASATCH STEEL** 243 West 3300 South • SLC, UT 84115 • (801) 486-4463 • FAX: (801) 486-0919

**SHOP ONLINE** Welding Supplies



**39**



# STAINLESS STEEL AND POWDER COATED RAILING

Contact your sales representative for more information on steel railing systems.



**PLEASE  
CALL FOR CURRENT  
PRICING**





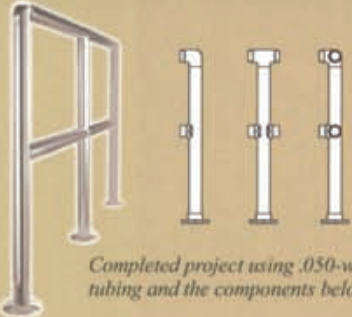
# STAINLESS STEEL AND POWDER COATED RAILING CONT'D



Now Available at **WASATCH STEEL**

1½"- and 2"-diameter tubing and components  
in Stainless Steel! *(Brass available by special order)*



Handrail	Foot Rail	Freestanding Rail
 <p>Completed project using .050-wall tubing and the components below.</p>	 <p>Completed project using .050-wall tubing and the components below.</p>	 <p>Completed project using .050-wall tubing and the components below.</p>



**308**  
Handrail Bracket

Item#	.050-wall Tubing
308/1H*	1 ½"
308/2*	2"



**608**  
Radius Wall Return

Item#	.050-wall Tubing
608/1H	1 ½"
608/2	2"



**301**  
Standard Handrail Bracket

Item#	.050-wall Tubing
301/1H	1 ½"
301/2	2"



**400**  
Combination Bracket

Item#	.050-wall Tubing
400/1H	1 ½"
400/2	2"



**402**  
Bar Mount Bracket

Item#	.050-wall Tubing
402/1H	1 ½"
402/2	2"



**602**  
Half Ball/Rounded End Cap

Item#	.050-wall Tubing
602/1H	1 ½"
602/2	2"



**600**  
Flush End Cap

Item#	.050-wall Tubing
600/1H	1 ½"
600/2	2"



**732**  
Flush Ell

Item#	.050-wall Tubing
732/1H	1 ½"
732/2	2"



**734**  
Flush Tee

Item#	.050-wall Tubing
734/1H	1 ½"
734/2	2"



**733**  
Flush Side Outlet Ell

Item#	.050-wall Tubing
733/1H	1 ½"
733/2	2"



**818**  
Perpendicular Collar

Item#	.050-wall Tubing
818/1H	1 ½"
818/2	2"



**510/530**  
Flange

Item#	.050-wall Tubing
510	1 ½"
530	2"



**540**  
Cover Plates

Item#	.050-wall Tubing
540B/1H	1 ½"
540/2	2"



A strong structural adhesive for joining metal components, Lido Weld will simplify your project assembly, while achieving a professional look.

*Lido Weld™ Adhesive*  
LB-00201



**604**  
Ball Finial

Item#	.050-wall Tubing
604/1H	1 ½"
604/2	2"

Recommended Floor-mounting using B-mount



Labels: Tubing, Cover Plate, Steel Liner, B-Mount

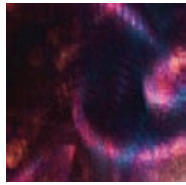




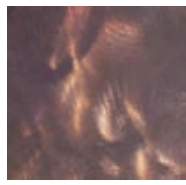
# STEEL FINISHES



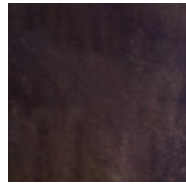
Copper Plate



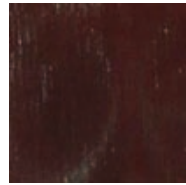
Copper Plate  
w/Rainbow  
Torch



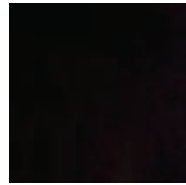
Copper Plate  
w/Dark Pewter



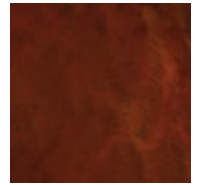
Gun Metal Blue



Antique Red/  
Brown



Midnight Black



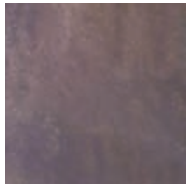
Auburn Rust



Copper Rust



Gold Rust

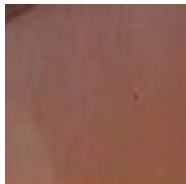


Dark Pewter



Light Pewter

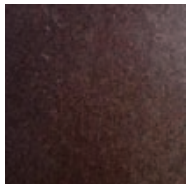
## METAL COATINGS



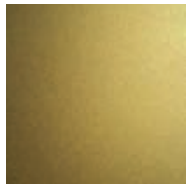
Copper Coating



Bronze Coating



Statue Bronze  
Coating



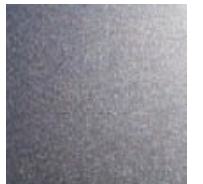
Brass Coating



Gold Coating

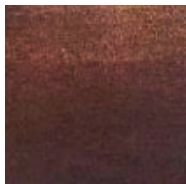


Steel Coating

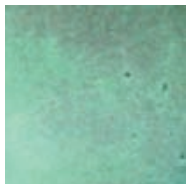


Aluminum  
Coating

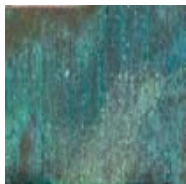
## PATINAS



Brown Tarnish



Patina



Verde Green

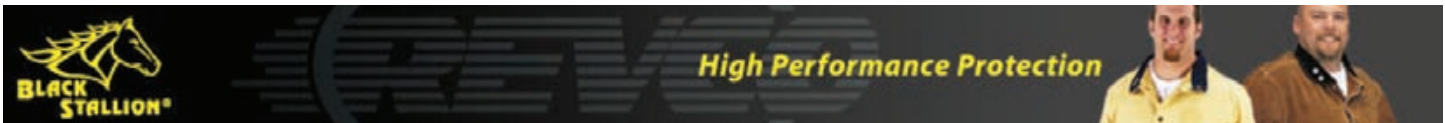


Aqua Blue





# GLOVES



High Performance Protection



5R



5Y



6B



17T



17



19P



98SO



99ACE-G



99ACE-P



99BLUE



99-DEER



99-PLUS



99PROBLK



99-CAMO



99SB



27E



28E



108



111R



120



200



320



550



570



750



795



850



COTTON



BLACK  
WELDING  
JACKET

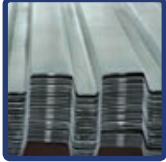









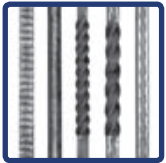


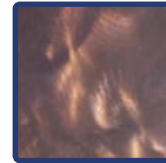



HYBID  
WELDING  
JACKET


**PLEASE  
CALL FOR CURRENT  
PRICING**



# CONTENTS

 B-Decking Page 4	 Multi-Tube Page 5	 Structural Steel Page 6	 Pipe Page 10	 Tubing Page 11
 Services 13	 Plate Page 15, 20	 Grating / Grip Strut Page 17	 Surplus Page 18	 Ornamental Page 21
 Pickets Page 22	 Hinges Accessories and Hardware Page 37	 Stainless Railing Page 40	 Steel Finishes Page 42	 Gloves Page 43



SHOP ONLINE  Welding Supplies

**YOUR STEEL SUPERMARKET**

243 West 3300 South • Salt Lake City, Utah 84115

www.wasatchsteel.com • Phone (801) 486-4463 • Fax: (801) 486-0919